

NEUTRICEA[®]

Feel Alive

Exporting the Goodness of Ayurveda to rest of the World

DIABETS

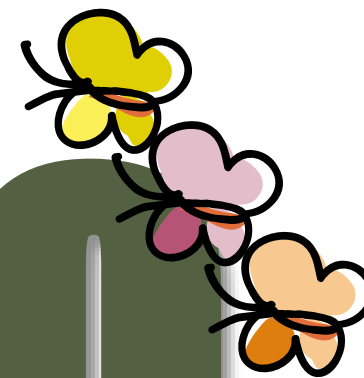
a metabolic disorder

nearly about *24% of the population*
are *suffering from diabets.*
percentage *may go as high as*
40-45% in 2020- WHO

Introducing

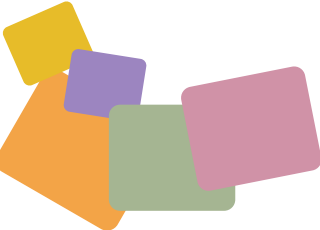
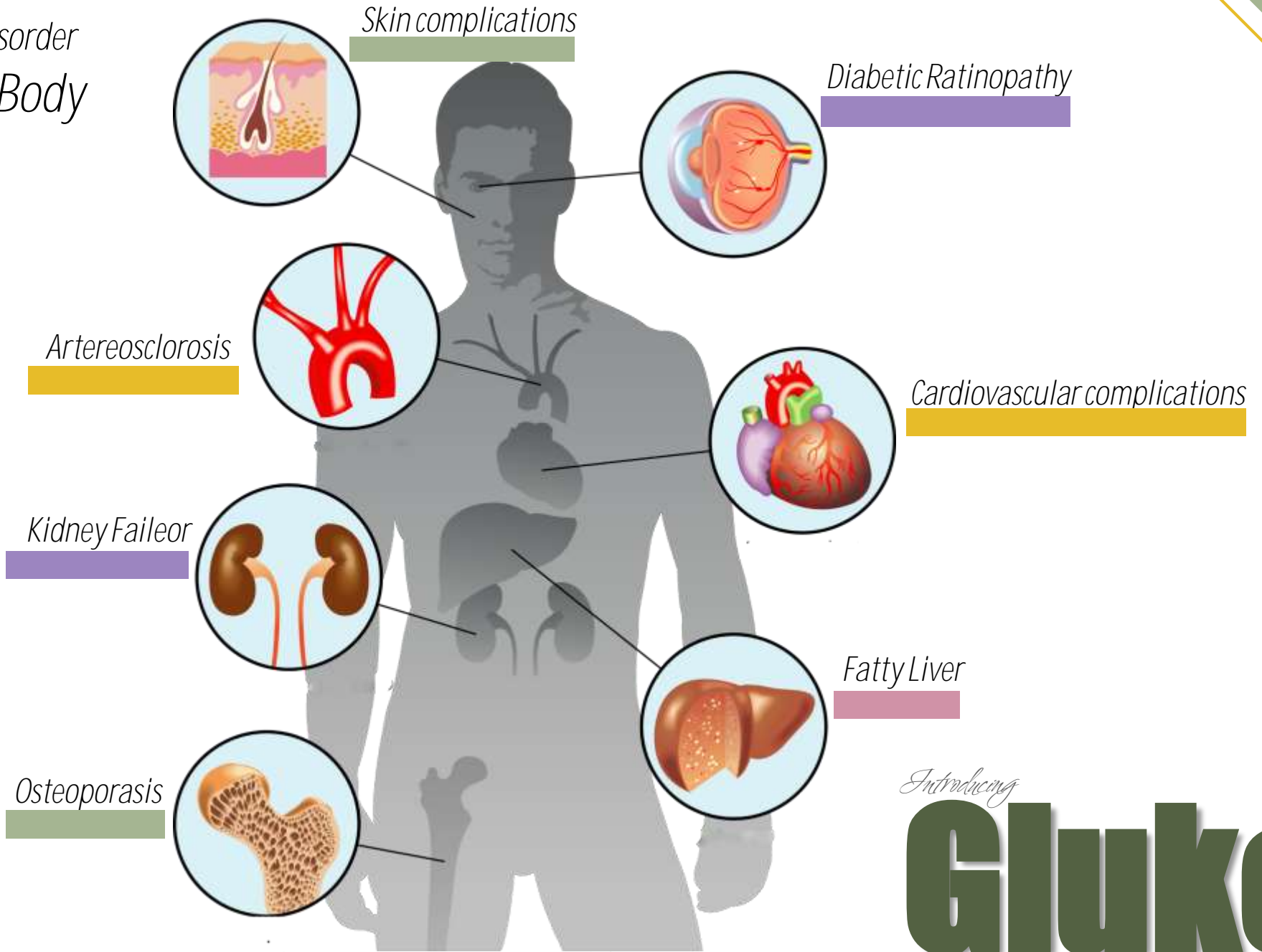
Gluko

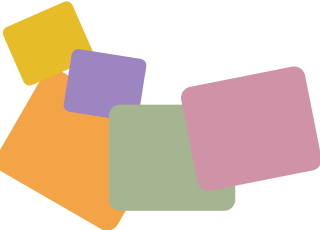
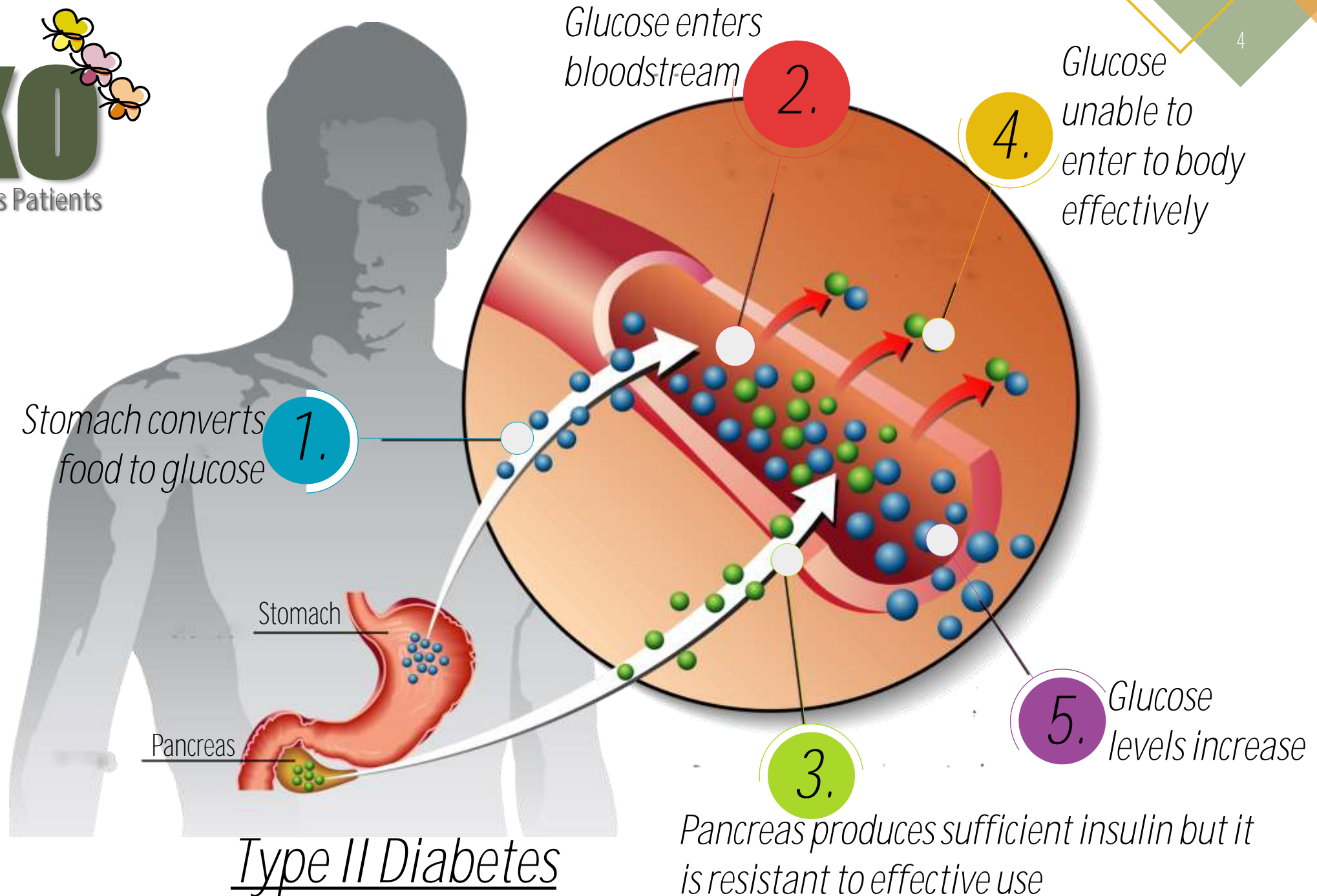
Right Choice for Diabetes Patients

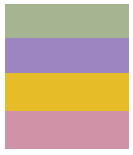


DIABETS *a metabolic disorder*

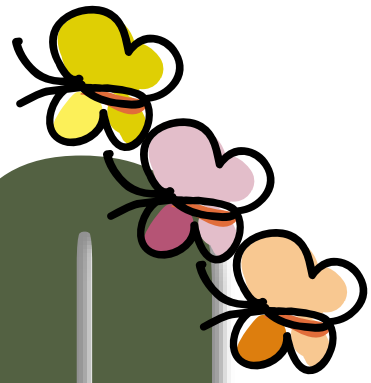
Damaging effect on Body







Introducing
GLUKO



Complications of diabetes:

Right Choice for Diabetes Patients

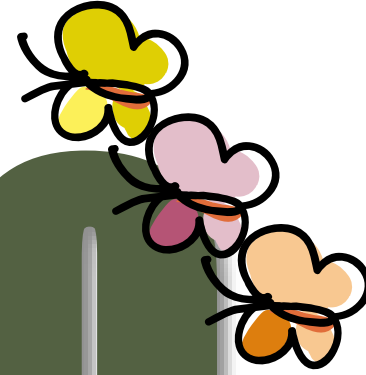
- Hridroga* (cardiac disorder)
- Loulya* (urge to have food)
- Anidra* (loss of sleep)
- Stambha* (stiffness of the body)
- Kampa* (shivering)





Introducing

GLUKO



Complications of diabetes:

Right Choice for Diabetes Patients

- *Shoola* (body ache)

- *Baddha purishata* (constipation)

- *Udavarta* (regurgitation)

- *Shosha* (emaciation)

- *Kasa* (cough)

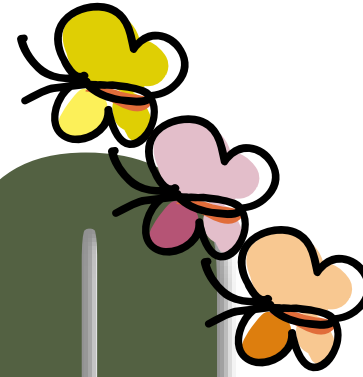
- *Shwasa* (dyspnea)











Introducing

GLUKO



Right Choice for Diabetes Patients

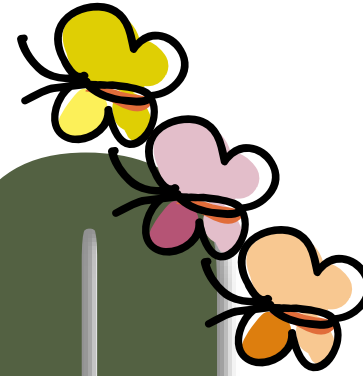
-  - *Activating Beta cells* for Insulin Production
-  - Prevent *Kidney Damage*
-  - Increase *Eye Sight*
-  - Increase *Mental Health*
-  - Reduces *Pain in legs*
-  - Beneficial in *Diabet type 1 and 2*





Introducing

GLUKO



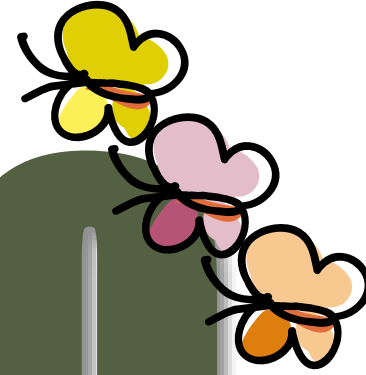
Right Choice for Diabetes Patients






-  -Corrects *Digestive tract*
-  -Effectively *Clean Blood*
-  -Effectively *Clean Blood*
-  -Prevents *Skin Dieses*
-  -Keeps *Liver Healthy*
-  -Increase *Immunity*





Introducing
GLUKO
Right Choice for Diabetes Patients

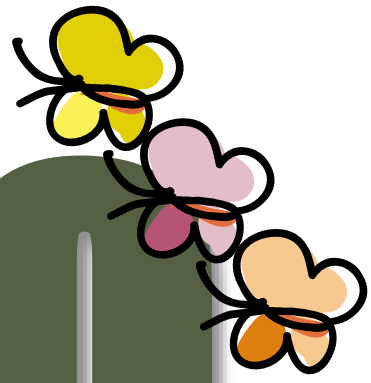












-  *Anti-diabetic*
-  *Antihyperglycemic*
-  *Antioxidant*
-  *Insulin sensitizer*
-  *Pancreas stimulant*





Prescribe
GLUKO
Right Choice for Diabetes Patients



-   *Pre-diabetes*
-   *Diabetes Mellitus*
-   *Polyuria* (excessive urination) – if it is due to diabetes
-   *Glycosuria* (excess sugar in the urine)
-   *Dyslipidemia & Hyperlipidemia*

Introducing

GLUKO

Right Choice for Diabetes Patients

WITH ADDED BENEFIT OF
ACRIDHANCER

Doubles the bio-availability of Nutrients or medicine

-By increasing the plasma half-life and delays their excretion

for increasing therapeutic effects and aims to *correct the imbalance of the three "doshas"* (VATA, PITTA, KAPHA psychophysical components of human body)

that can lead to disease

THANKS YOU DOCTOR

For your valuable prescription for

GIUKO

Right Choice for Diabetes Patients



Since 1999

